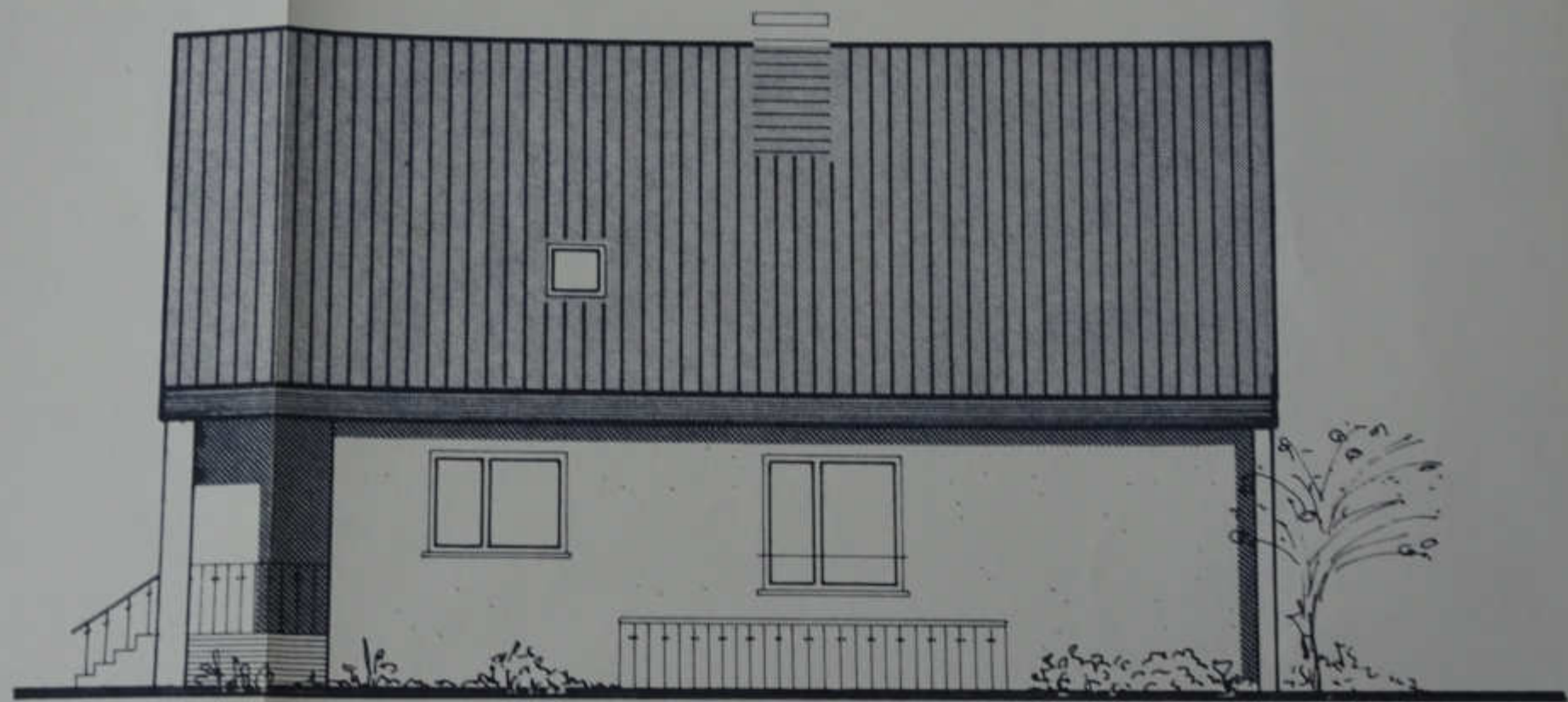


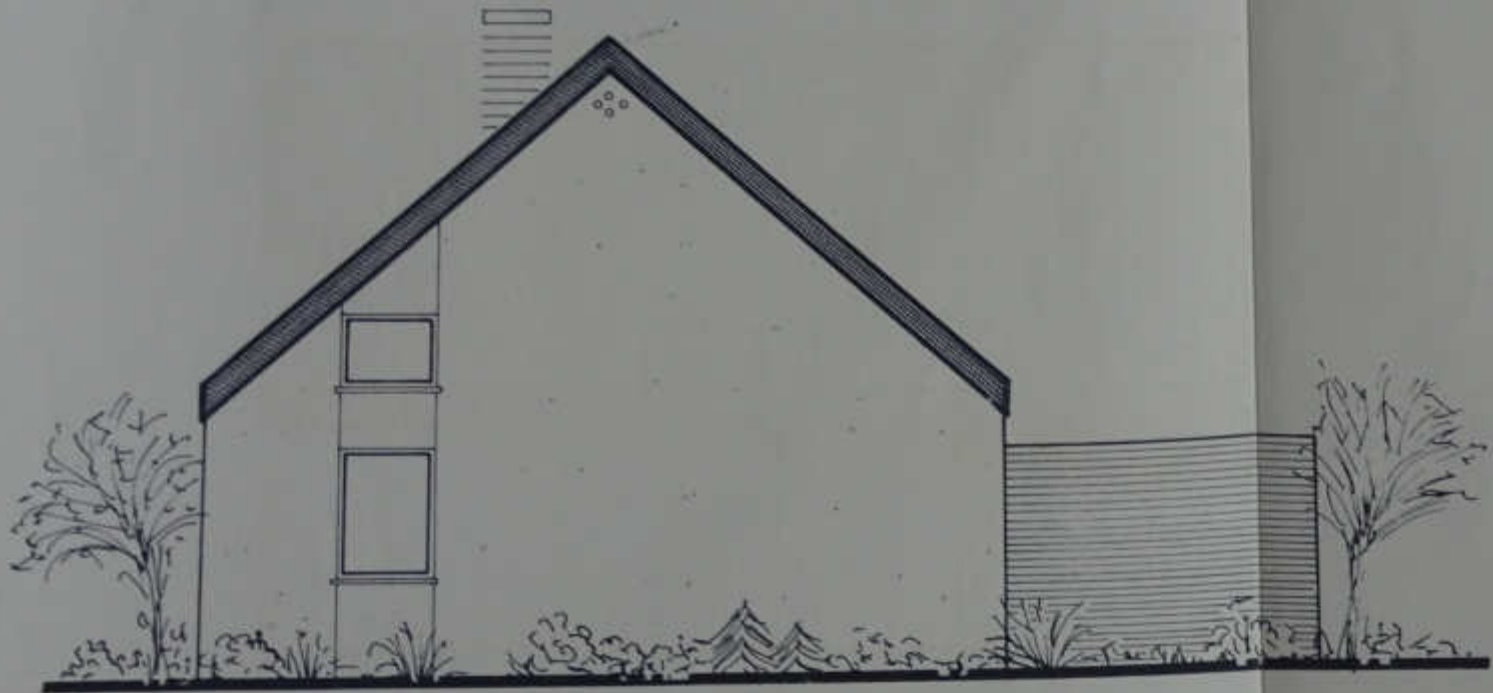
SÜDANSICHT



NORDANSICHT



OSTANSICHT



WESTANSICHT

~ 9.60

~ 12.00

~ 21.60

14.49

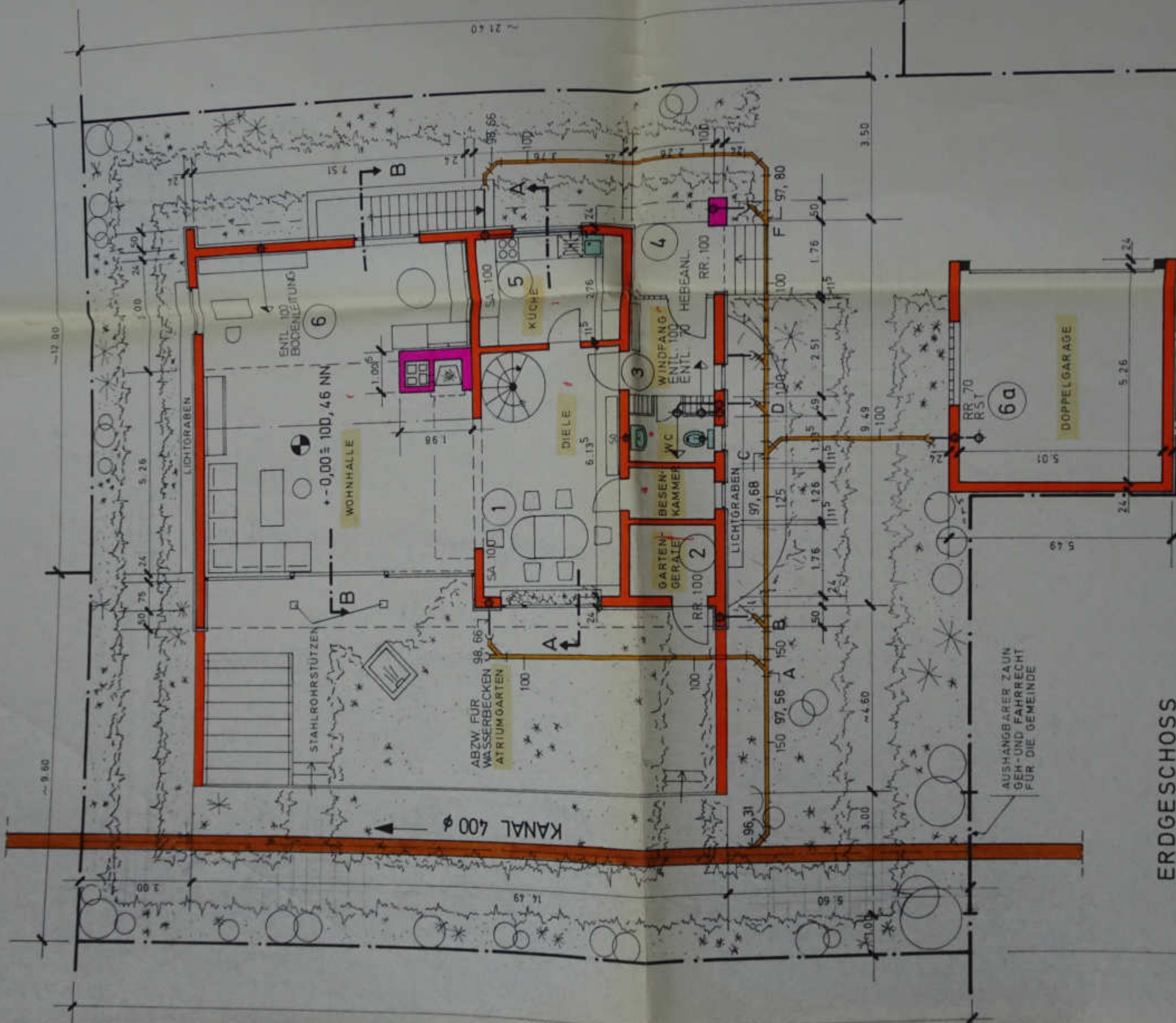
~ 23.10

5.60

~ 4.60

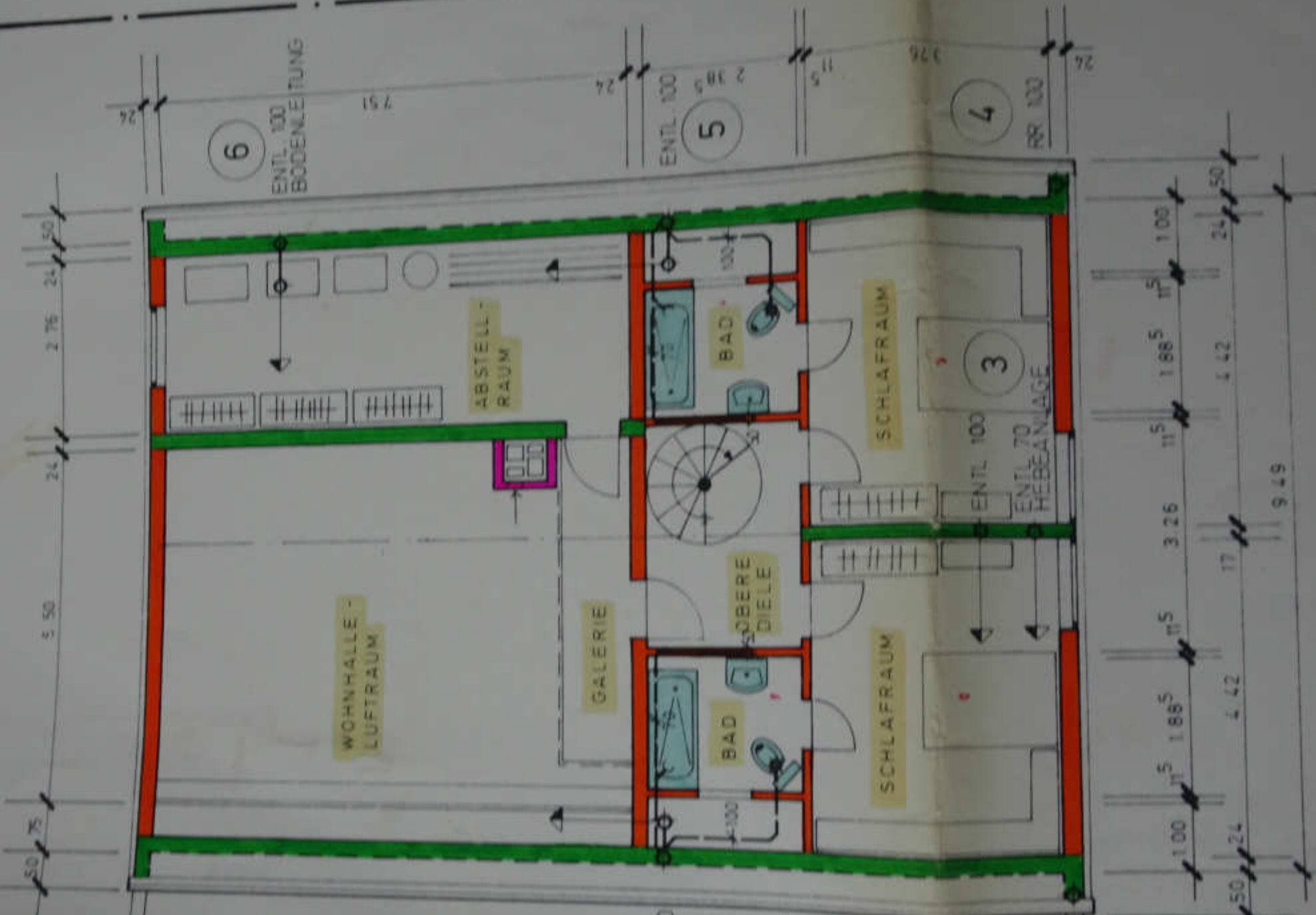
5.49

3.50



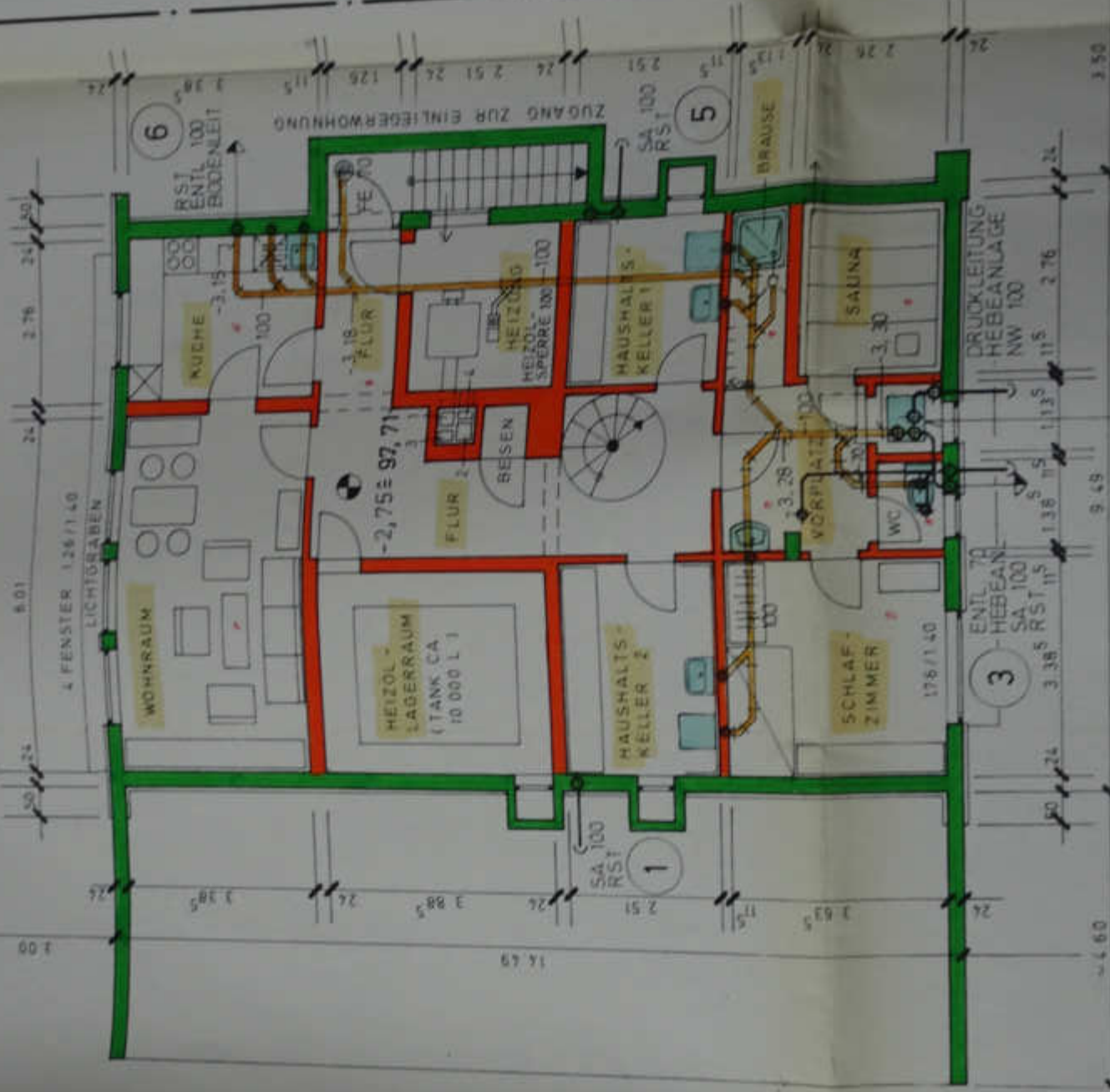
AUSHANGBARER ZAUN
 GEH- UND FAHRRECHT
 FÜR DIE GEMEINDE

ERDGESCHOSS

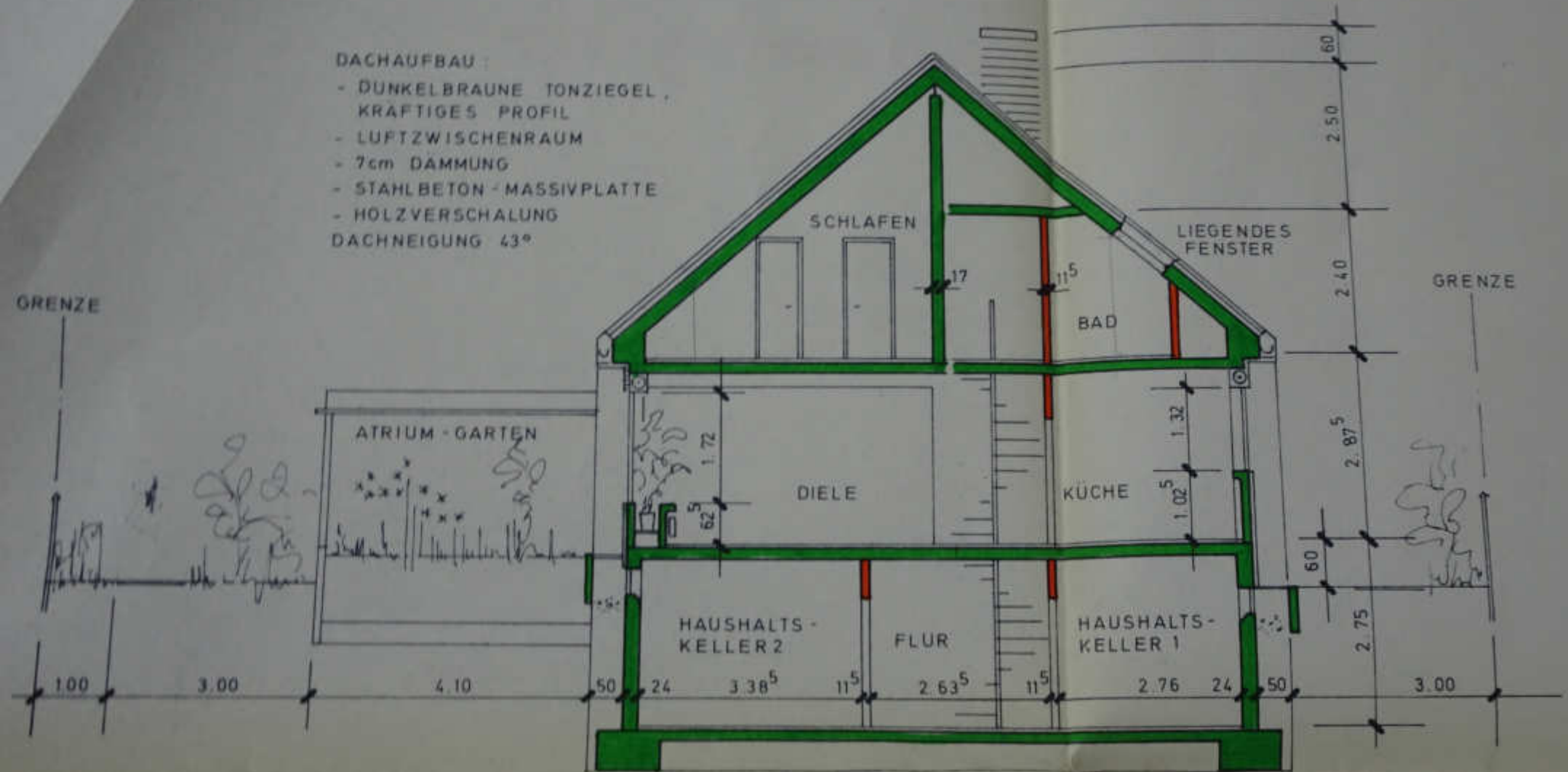


- GRUNDSTÜCKSGRENZE -

GRUNDSTÜCKSGRENZE

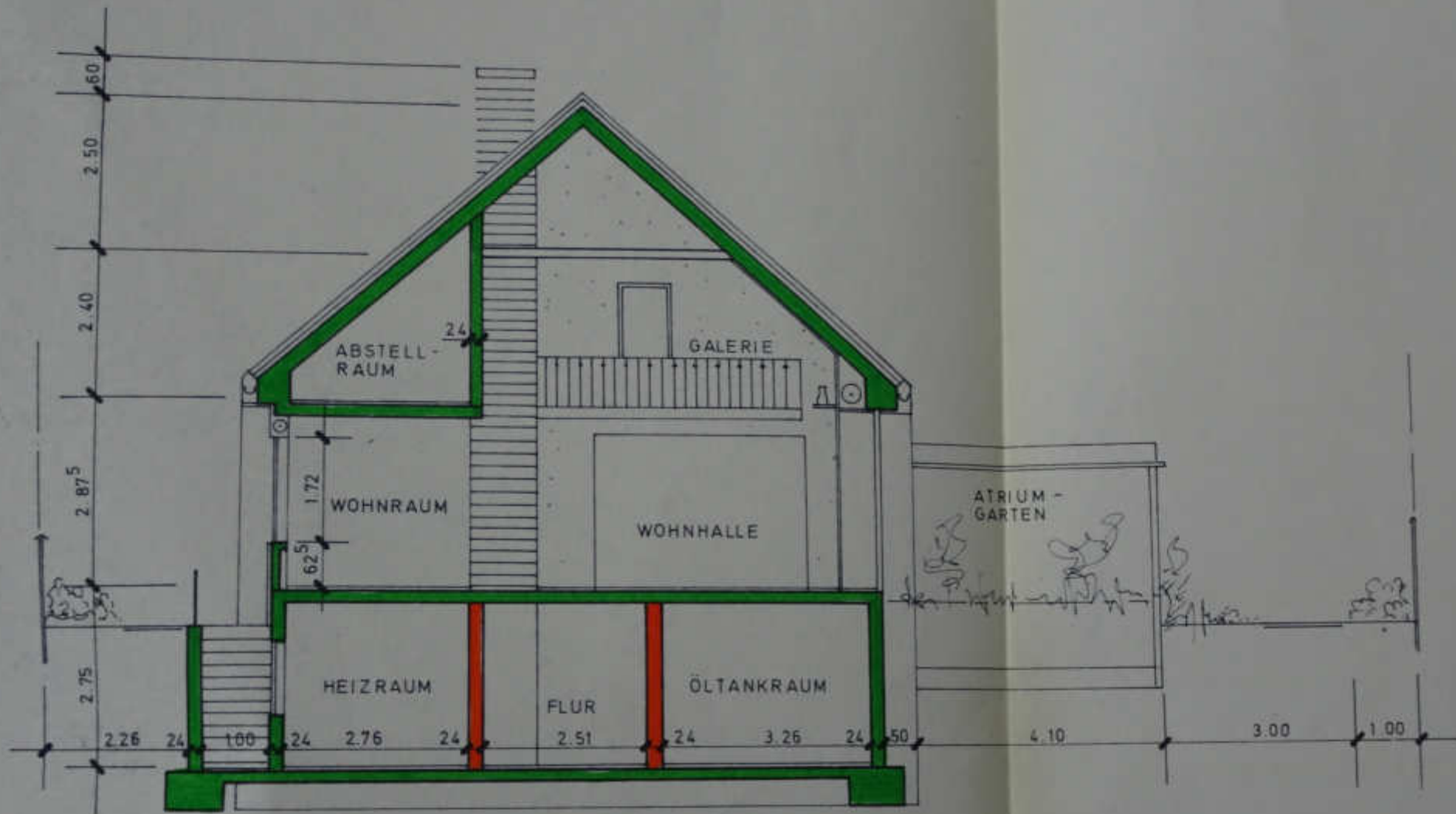


- DACHAUFBAU :
- DUNKELBRAUNE TONZIEGEL ,
KRAFTIGES PROFIL
 - LUFTZWISCHENRAUM
 - 7cm DAMMUNG
 - STAHLBETON - MASSIVPLATTE
 - HOLZVERSCHALUNG
- DACHNEIGUNG 43°



⊙ KANAL Ø 400

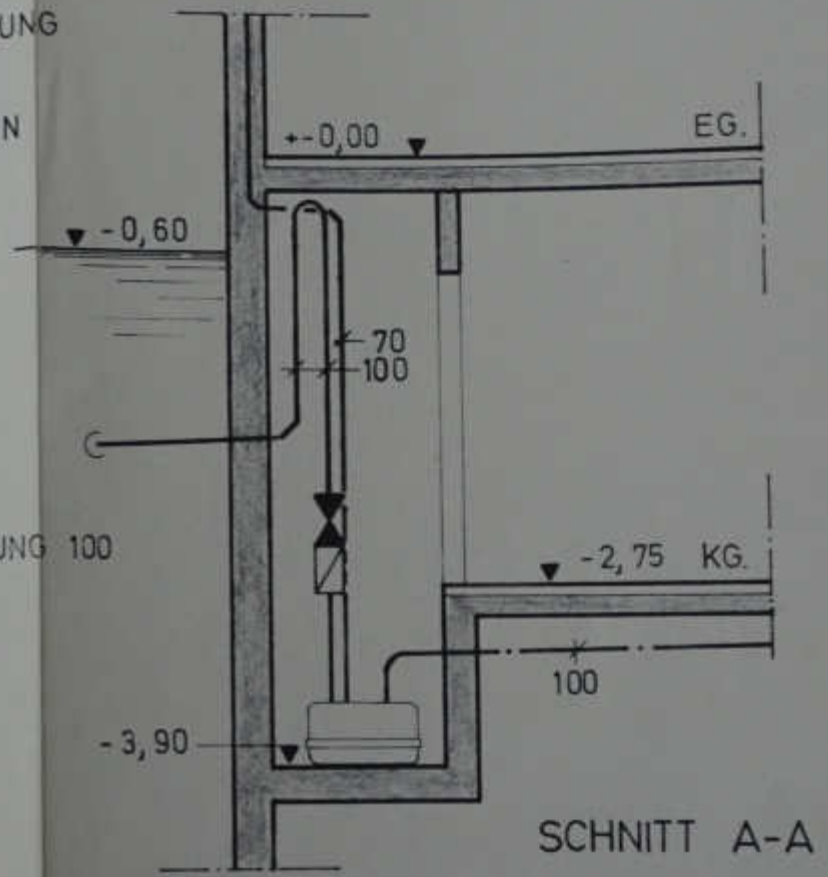
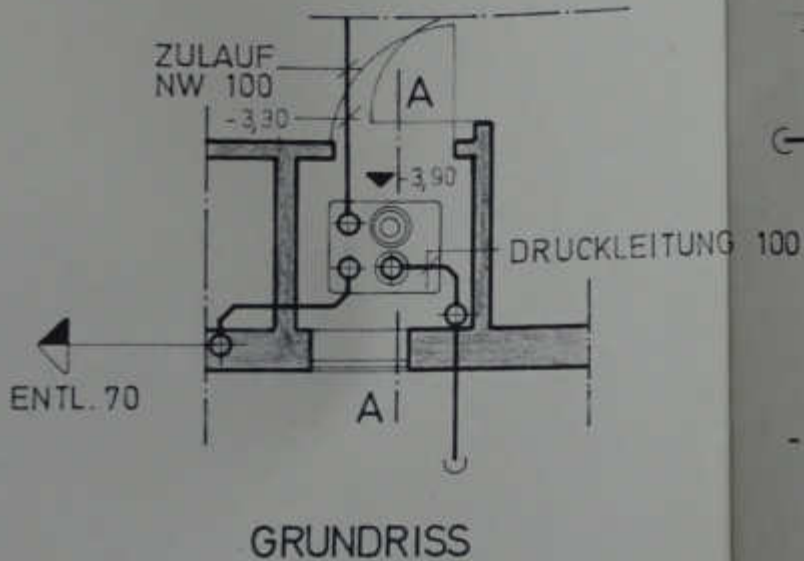
SCHNITT A - A



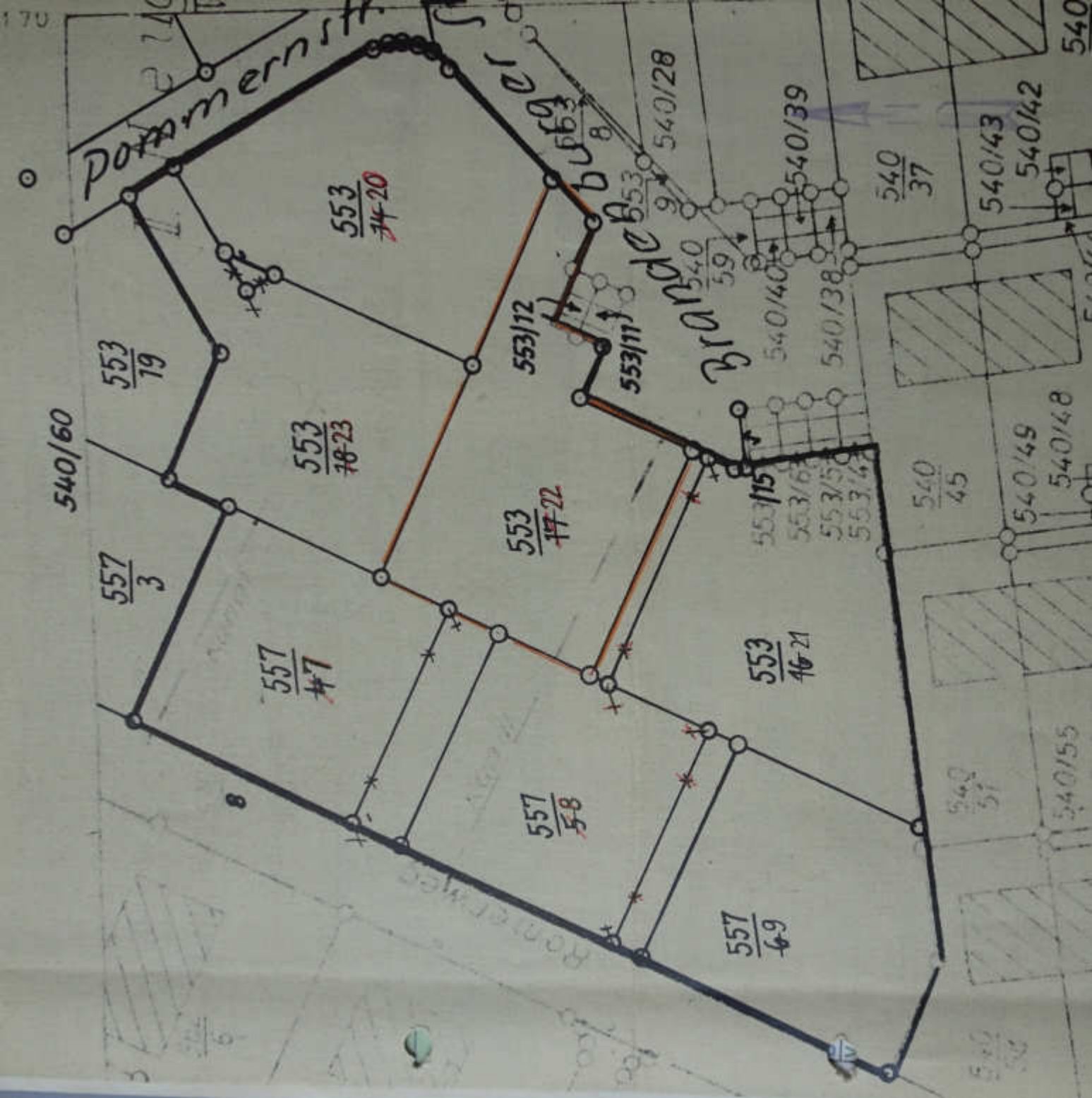
SCHNITT B - B

○ KANAL ø 400

PLANUNG DER ENTWÄSSERUNG
 ING. A. NIEDERMAYER
 6700 LUDWIGSHAFEN / RHEIN



DETAIL: HEBEANLAGE M. 1:50



Potamernstr

BROUDE

540/60

553/19

553/20

553/23

553/12

553/11

540/28

540/39

540/37

540/43

540/42

557/3

557/7

553/22

553/46-21

553/15

540/45

540/49

540/48

557/58

557/49

540/51

540/55

8

Rommelweg

540/58

540/59

540/60

540/61

540/62

540/63

540/64

540/65

540/66

540/67

540/68

540/69

540/70